

LONGITUDINAL BUFFER SPACE = B

POSTED SPEED (MPH)	25	30	35	40	45
LENGTH B (FEET)	55	85	120	170	270

SIGN SPACING = X

RURAL ROADS	45 / 55 MPH	500' ±
RURAL ROADS & URBAN ARTERIALS	35 / 40 MPH	350' ±
RURAL ROADS, URBAN ARTERIALS, RESIDENTIAL & BUSINESS DISTRICTS	25 / 30 MPH	200' ±
URBAN STREETS	25 MPH OR LESS	100' ±

ALL SIGNS ARE BLACK ON ORANGE UNLESS DESIGNATED OTHERWISE

ALL SIGN SPACING MAY BE ADJUSTED TO ACCOMMODATE AT-GRADE INTERSECTIONS AND DRIVEWAYS.

MINIMUM TAPER LENGTH = L (FEET)

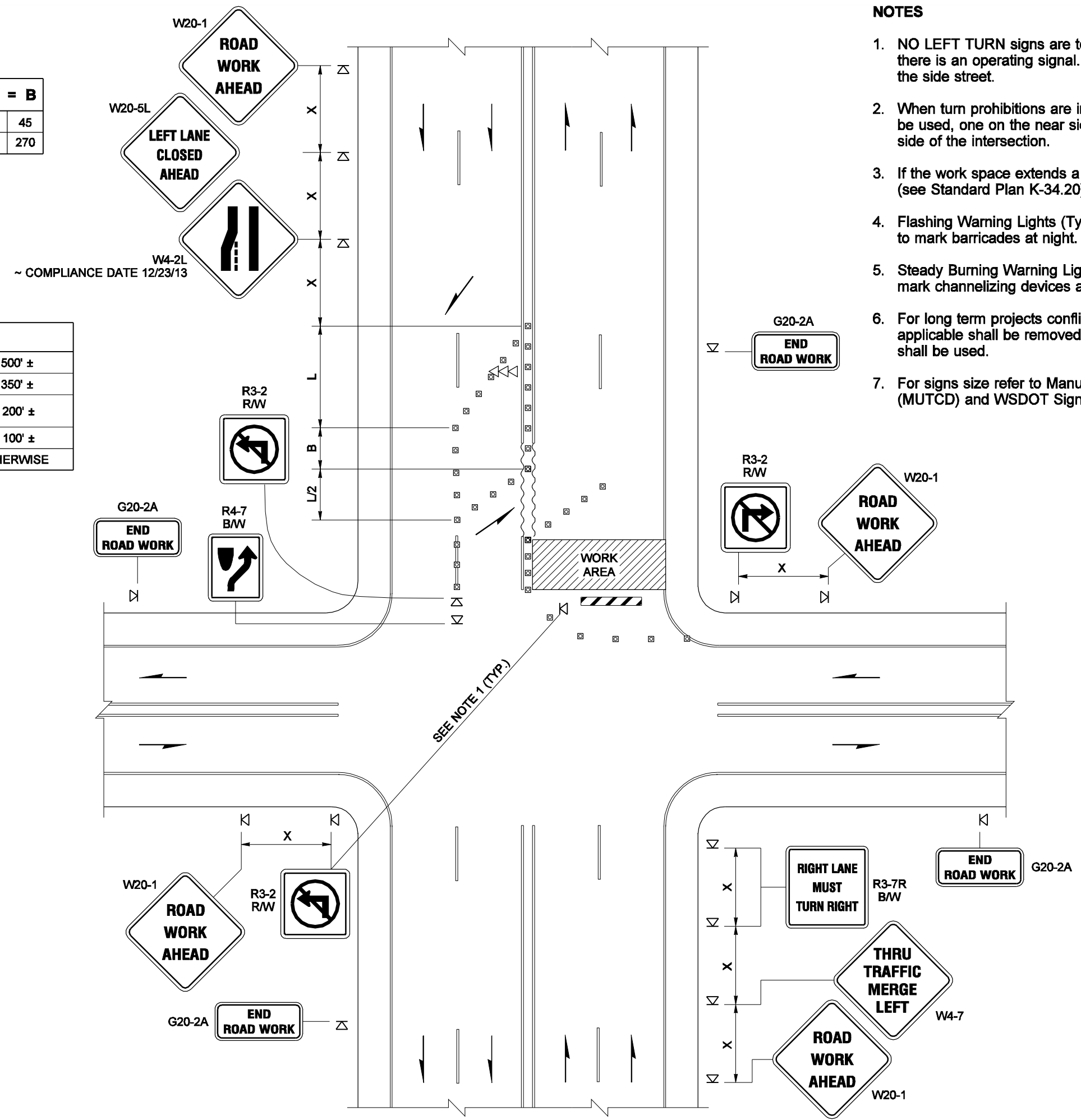
LANE WIDTH (FEET)	POSTED SPEED (MPH)						
	25	30	35	40	45	50	55
10	105	150	205	270	450	500	550
11	115	165	225	294	495	550	605
12	125	180	245	320	540	600	660

CHANNELIZING DEVICE SPACING

POSTED SPEED (MPH)	IN TAPER (FEET)	IN TANGENT (FEET)
50 / 70	40	80
35 / 45	30	60
25 / 30	20	40

LEGEND

- ⊠ SIGN LOCATION
- ▣ CHANNELIZING DEVICES
- ➡➡➡ ARROW PANEL
- ▨ BARRICADE ~ TYPE 3 L
- ~~~~~ OBLITERATED MARKING



NOTES

1. NO LEFT TURN signs are to be used if traffic volumes are too high or there is an operating signal. Close the left turn pocket if there is one on the side street.
2. When turn prohibitions are implemented, two turn prohibition signs should be used, one on the near side and, space permitting, one on the far side of the intersection.
3. If the work space extends a crosswalk, the crosswalk should be closed (see Standard Plan K-34.20).
4. Flashing Warning Lights (Type A per MUTCD) should be used, as needed, to mark barricades at night.
5. Steady Burning Warning Lights (Type C per MUTCD) shall be used to mark channelizing devices at night.
6. For long term projects conflicting pavement markings that are no longer applicable shall be removed or obliterated. Temporary markings shall be used.
7. For signs size refer to Manual on Uniform Traffic Control Devices (MUTCD) and WSDOT Sign Fabrication Manual M55-05.

**FOR LOCAL AGENCY USE ONLY
NOT FOR USE ON STATE ROUTES**



EXPIRES AUGUST 9, 2007

**INTERSECTION
~ HALF ROAD CLOSURE
WITH LANE SHIFT
STANDARD PLAN K-32.80-00**

SHEET 1 OF 1 SHEET

APPROVED FOR PUBLICATION

Ken L. Smith **02-15-07**
STATE DESIGN ENGINEER DATE

Washington State Department of Transportation

NOTE: THIS PLAN IS NOT A LEGAL ENGINEERING DOCUMENT UNLESS IT IS SIGNED BY THE ENGINEER AND APPROVED FOR PUBLICATION IS KEPT ON FILE AT THE WASHINGTON STATE DEPARTMENT OF TRANSPORTATION. A COPY MAY BE OBTAINED UPON REQUEST.