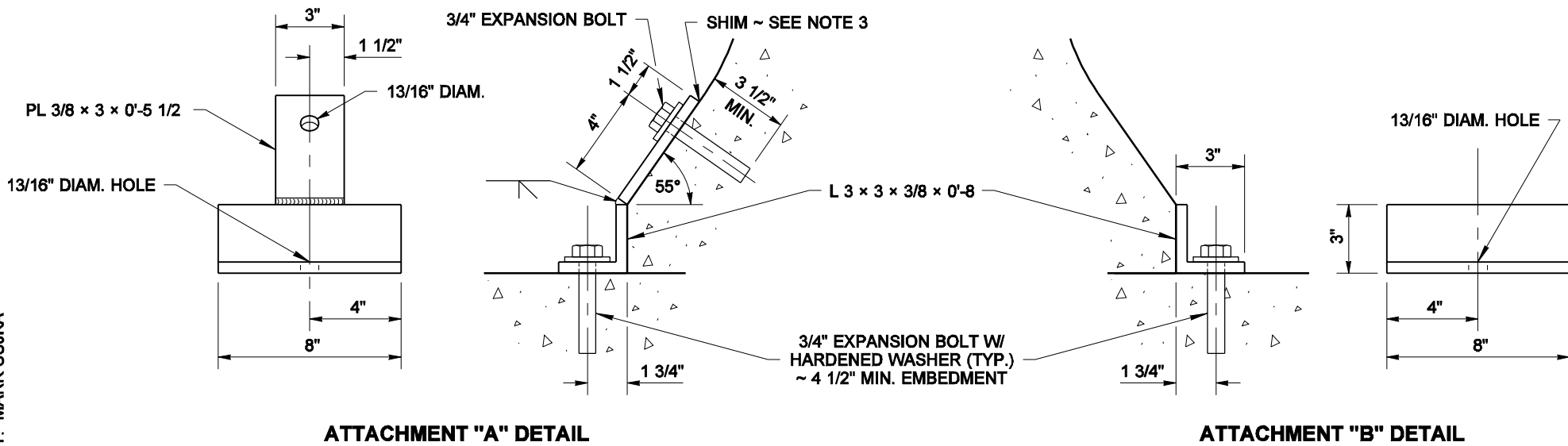
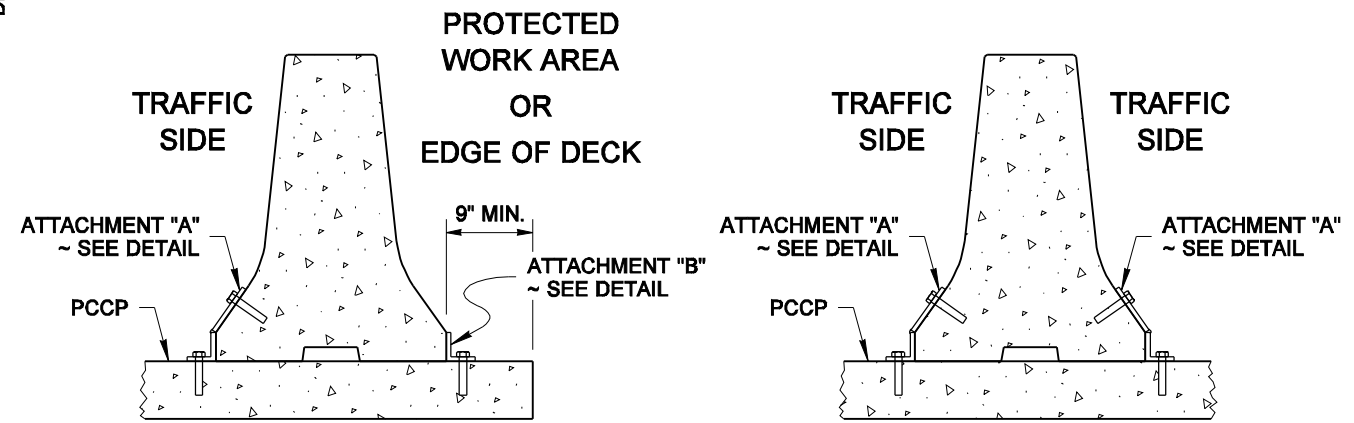


DRAWN BY: MARK SUJKA

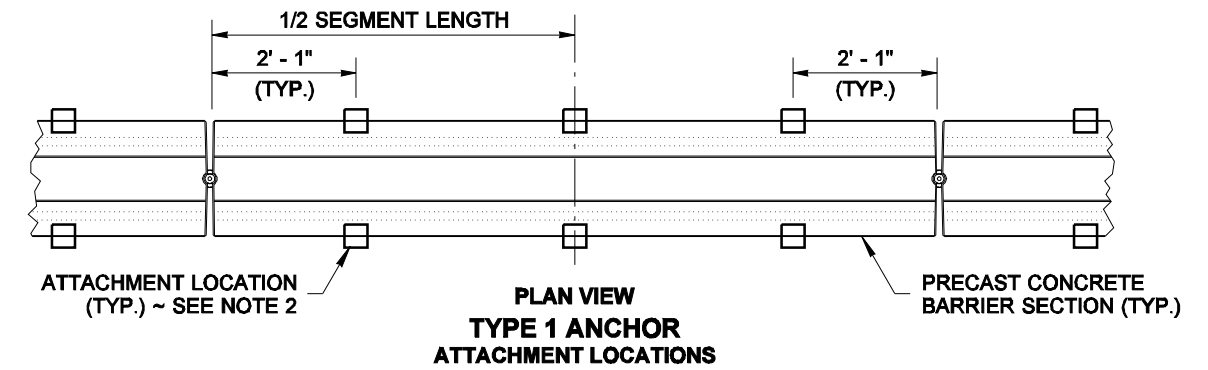


NOTES

1. Use Type 1 Anchors when the concrete pavement or bridge deck is 6" or thicker with 2' wide concrete barrier only. Use Type 2 Anchors (Standard Plan K-80.37) with narrow base barrier.
2. Adjust the location of the Type 1 Anchors to avoid the main reinforcing in the deck when drilling holes.
3. Use shims to properly fit the Type 1 Anchors to the barrier and roadway surfaces.
4. Upon removal of the Type 1 Anchors, clean the bolt holes and fill them with grout according to Standard Specification 6.02.3(20).
5. Remove the Type 3 Anchors by first driving the steel pins down through the barrier further into the pavement to allow lifting the barrier without interference, then remove the pins from the pavement.
6. After removing the Type 3 Anchors, clean the pin holes and fill them with sealant according to Standard Specification 9-04.2.

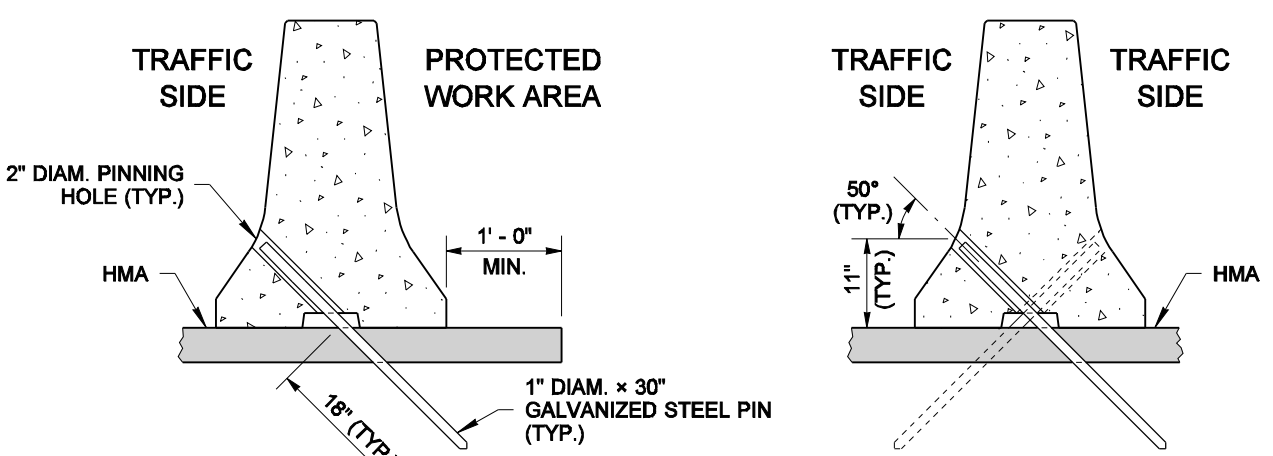


**SECTION VIEWS
(F-SHAPE SHOWN)
TYPE 1 ANCHOR
ATTACHMENT LOCATIONS**

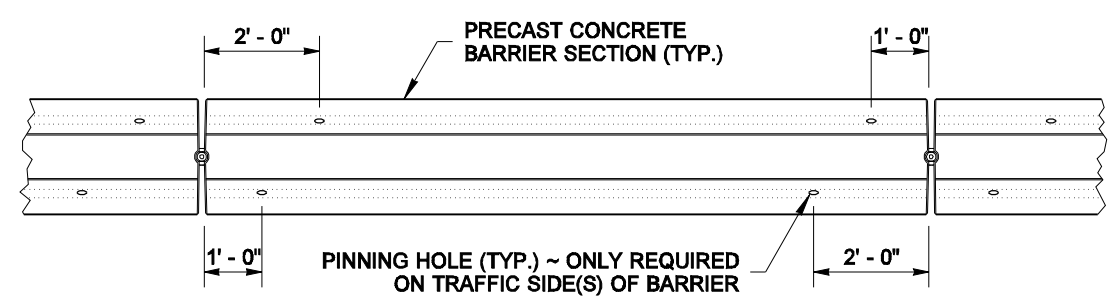


**PLAN VIEW
TYPE 1 ANCHOR
ATTACHMENT LOCATIONS**

TYPE 1 ANCHOR
TEMPORARY INSTALLATION OF
PRECAST CONC. BARRIER TYPE 2 (STD. PLAN C-8) AND
TEMPORARY CONC. BARRIER (F-SHAPE) (STD. PLAN K-80.30)
ON CEMENT CONC. PAVEMENT OR BRIDGE DECK



**SECTION VIEWS
(F-SHAPE SHOWN)
TYPE 3 ANCHOR
PIN LOCATIONS**



**PLAN VIEW
TYPE 3 ANCHOR
PIN LOCATIONS**

TYPE 3 ANCHOR
TEMPORARY INSTALLATION OF
PRECAST CONC. BARRIER TYPE 2 (STD. PLAN C-8) AND
TEMPORARY CONC. BARRIER (F-SHAPE) (STD. PLAN K-80.30)
ON HOT MIX ASPHALT PAVEMENT



NOTE: THIS PLAN IS NOT A LEGAL ENGINEERING DOCUMENT BUT AN ELECTRONIC DUPLICATE. THE ORIGINAL, SIGNED BY THE ENGINEER AND APPROVED FOR PUBLICATION, IS KEPT ON FILE AT THE WASHINGTON STATE DEPARTMENT OF TRANSPORTATION. A COPY MAY BE OBTAINED UPON REQUEST.

TEMPORARY CONC. BARRIER ANCHORING
STANDARD PLAN K-80.35-00

SHEET 1 OF 1 SHEET
APPROVED FOR PUBLICATION
Ken L. Smith 02-21-07
STATE DESIGN ENGINEER DATE
Washington State Department of Transportation