



-START DURING WA1
-FINISH BEFORE WA1 IS COMPLETE
-35 CONTINUOUS CALENDAR DAYS
-CLOSURE = 24HRS

-START DURING WA1
-FINISH BEFORE WA1 IS COMPLETE
-7 CONTINUOUS CALENDAR DAYS
-CLOSURE = 24HRS

-START MID MAY
-35 CONTINUOUS CALENDAR DAYS
-CLOSURE = 24HRS

WA 2A

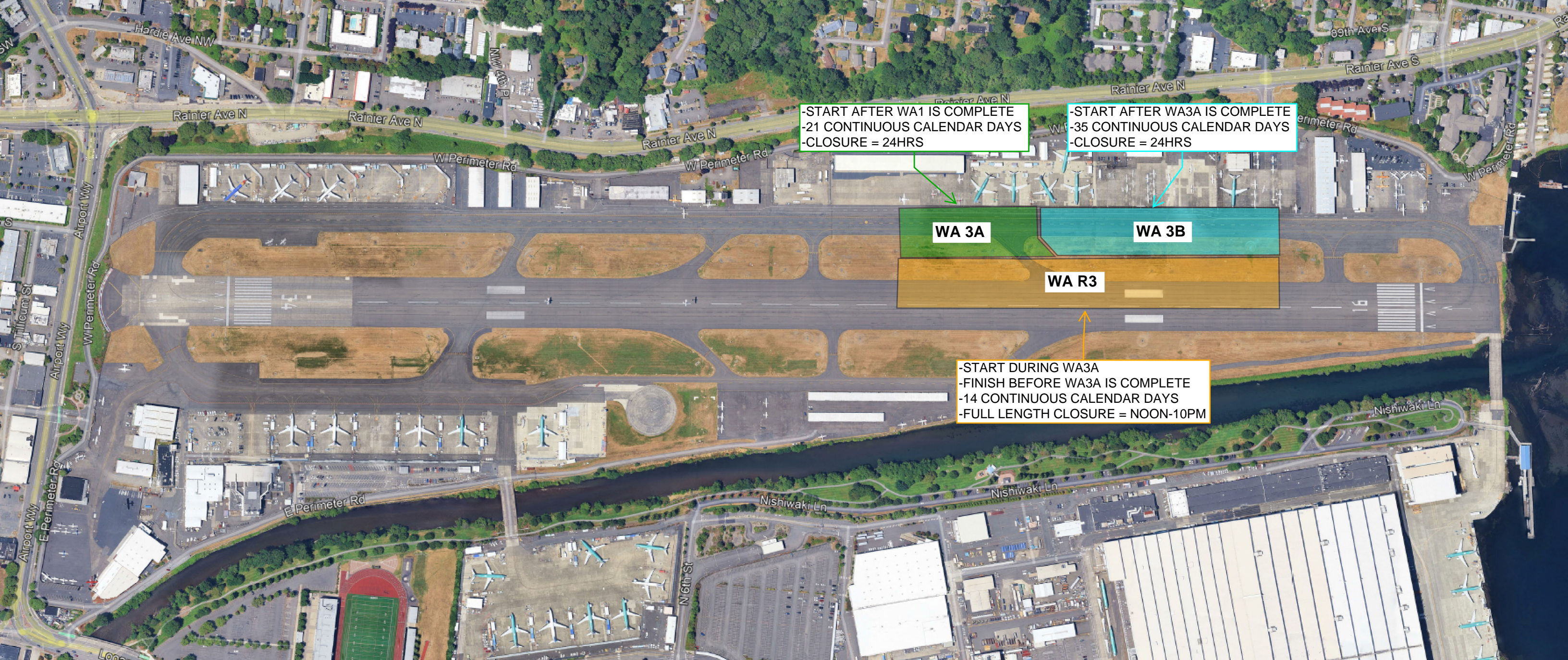
WA 2B

WA 1

WA R1

-START DURING WA1
-FINISH BEFORE WA1 IS COMPLETE
-14 CONTINUOUS CALENDAR DAYS
-FULL LENGTH CLOSURE = NOON-10PM

RENTON MUNICIPAL AIRPORT TAXIWAY ALPHA REHABILITATION PROJECT PHASE 1 - 2026



-START AFTER WA1 IS COMPLETE
-21 CONTINUOUS CALENDAR DAYS
-CLOSURE = 24HRS

-START AFTER WA3A IS COMPLETE
-35 CONTINUOUS CALENDAR DAYS
-CLOSURE = 24HRS

WA 3A

WA 3B

WA R3

-START DURING WA3A
-FINISH BEFORE WA3A IS COMPLETE
-14 CONTINUOUS CALENDAR DAYS
-FULL LENGTH CLOSURE = NOON-10PM

RENTON MUNICIPAL AIRPORT TAXIWAY ALPHA REHABILITATION PROJECT PHASE 1 - 2026



-START AFTER WA3B IS COMPLETE
-21 CONTINUOUS CALENDAR DAYS
-CLOSURE = 24HRS

WA 4

WA R4

-START DURING WA4
-FINISH BEFORE WA4 IS COMPLETE
-14 CONTINUOUS CALENDAR DAYS
-FULL LENGTH CLOSURE = NOON-10PM

RENTON MUNICIPAL AIRPORT TAXIWAY ALPHA REHABILITATION PROJECT PHASE 1 - 2026



**RENTON MUNICIPAL AIRPORT
TAXIWAY ALPHA REHABILITATION PROJECT PHASE 1 - 2026**